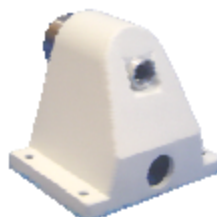


# Product Data Sheet: DRX Series Floor Mounting Door Retainers



Vandal-Proof Button

## Description

Our DRX range of door retainers is ideally suited to applications where maximum protection is needed against vandalism or accidental damage. It features a rugged cast aluminium housing, a holding magnet with integral ejection pin and a manual release switch.

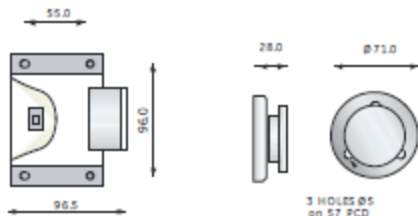
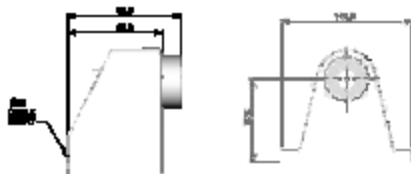
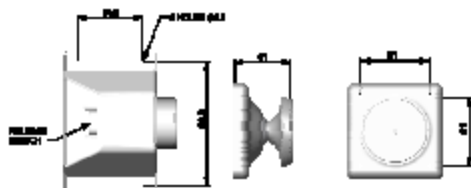
Installation is, with knockouts provided for entry of surface mount conduit, there is ample space to connect external wiring to the 4.0mm terminals.

Each DRX door retainer is fitted with a spring loaded release pin mounted centrally within the electro-magnet. On power off, the release pin then ensures that the fire door is pushed away from the electro-magnet.

All door holders are supplied complete with a door mounting keeper plate. Additional accessory products are available, including floor brackets, chains and additional keeper plates.

All Cranford Controls door retainers are designed to comply to the latest requirements of EN 61000-3-2, EN 50081-1, EN 60950 and EN 1155.

## Dimensions



## Technical Information

Part No.	DRX-200	DRX-200-VP	DRX-500	DRX-500-VP
Supply Voltage and Tolerance:	24Vdc $\pm$ 10%			
Current Consumption:	45mA		90mA	
Minimum Rated Holding Force:	200N (20.4kg)		500N (51kg)	
Maximum Holding Force:	250N (25.5kg)		750N (76kg)	
Residual Holding:	ZERO			
Release Switch:	YES			
Protection:	IP51			
Keeper Adjustment:	$\pm$ 15 °			
Weight (per unit packed):	700g		1000g	
Door Closer, Power Size:	3 - 6			

