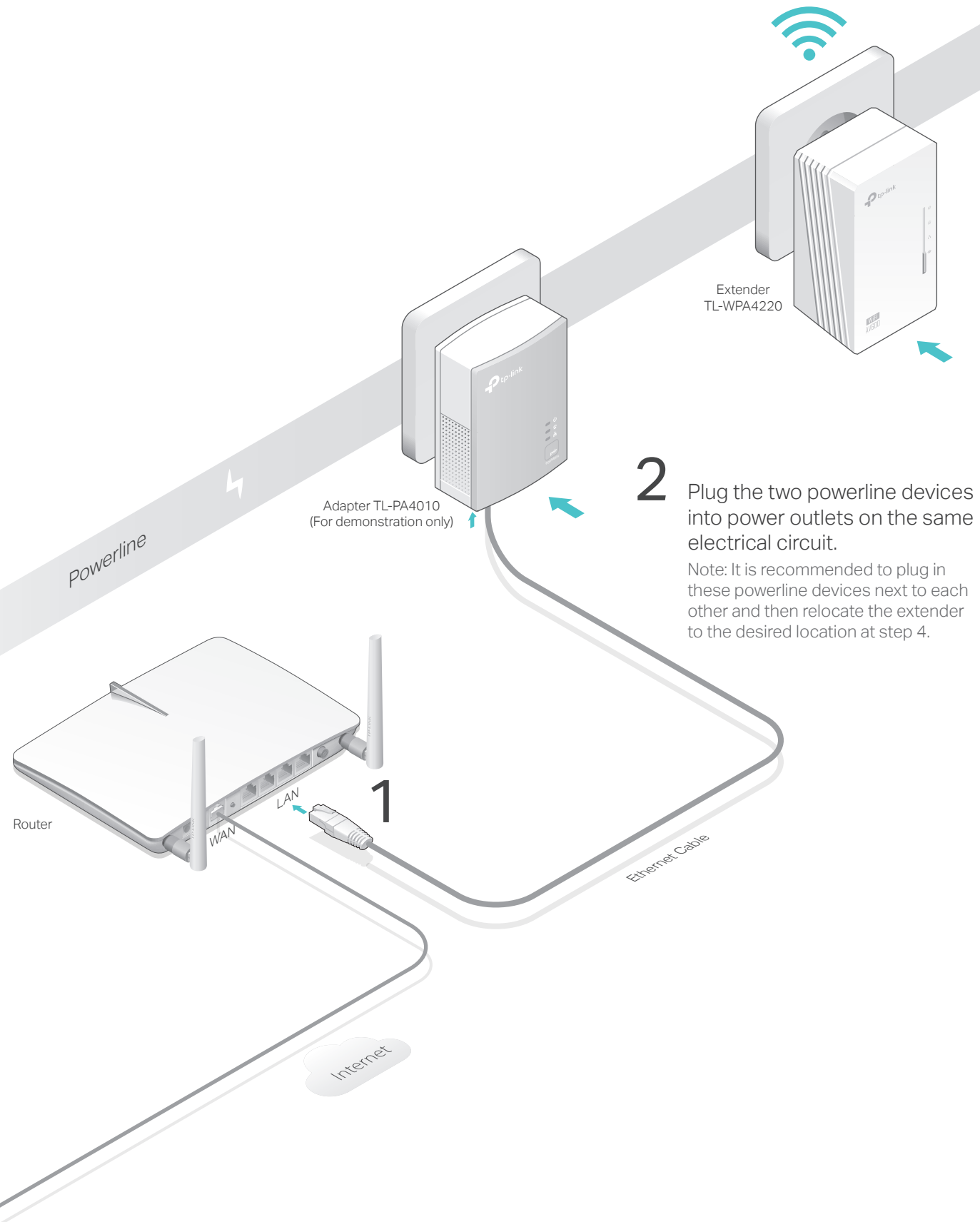





Hello, I'm here.  
Follow me to extend your Wi-Fi network.

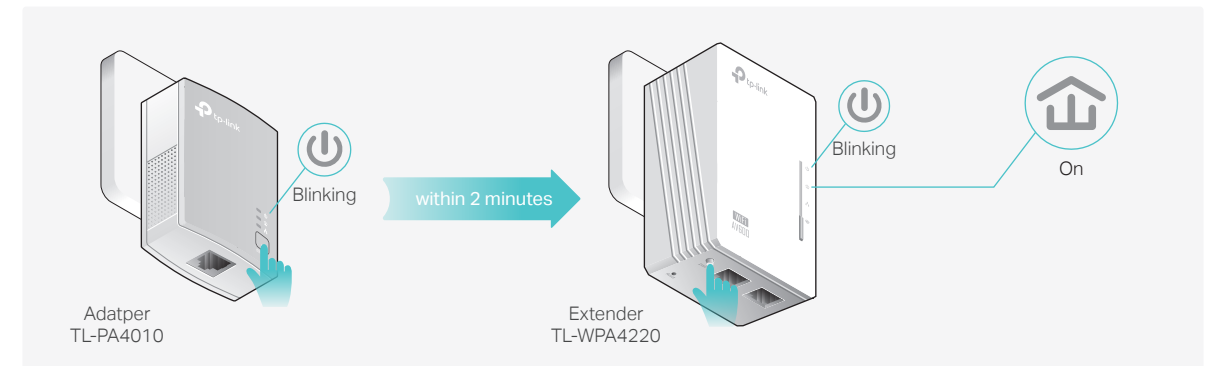


### 3 Pair the powerline devices.

**A** Press the Pair button on the adapter for 1 second. The Power LED  starts blinking.  
Note: If the Power LED does not blink, press the Pair button again.

**B** Within 2 minutes, press the Pair button on the extender for 1 second. The Power LED  starts blinking.

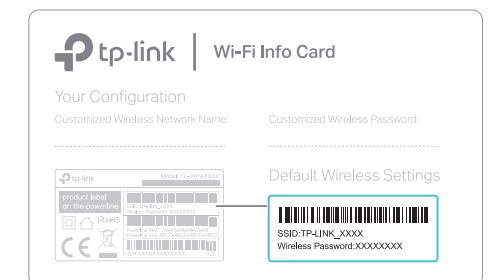
**C** When the Powerline LED  on the extender turns solid, the pairing process is complete.



### 4 Enjoy!

Relocate the new extender to the Wi-Fi "dead" zone. Use the SSID (network name) and password on the provided Wi-Fi Info Card to connect to the Internet.

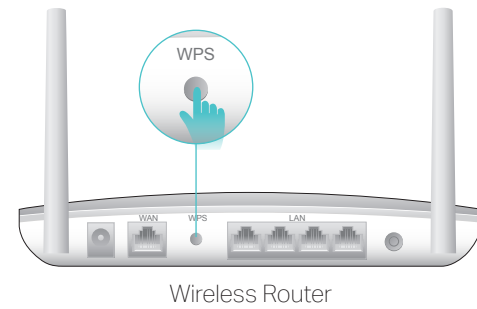
Note: A red Powerline LED  indicates poor signal strength. Move the extender to another location.



## Wi-Fi Clone

Wi-Fi Clone allows you to copy the main router's wireless settings (SSID and password) to the powerline extender in seconds.

1. Plug in the powerline extender near your router, and press the WPS button on the router.



2. Within 2 minutes, press the Wi-Fi Clone button on the extender for 1 second.



3. The Wi-Fi Clone process is complete.

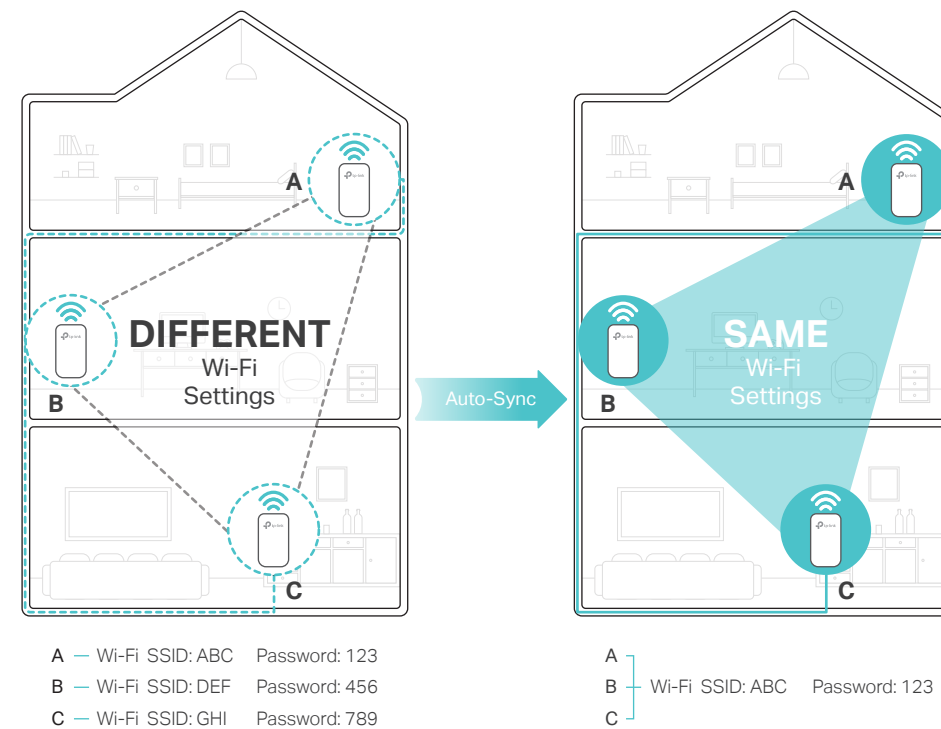
## Wi-Fi Auto-Sync

Wi-Fi Move technology helps to keep the wireless settings on your powerline extenders in sync after your powerline devices are paired.

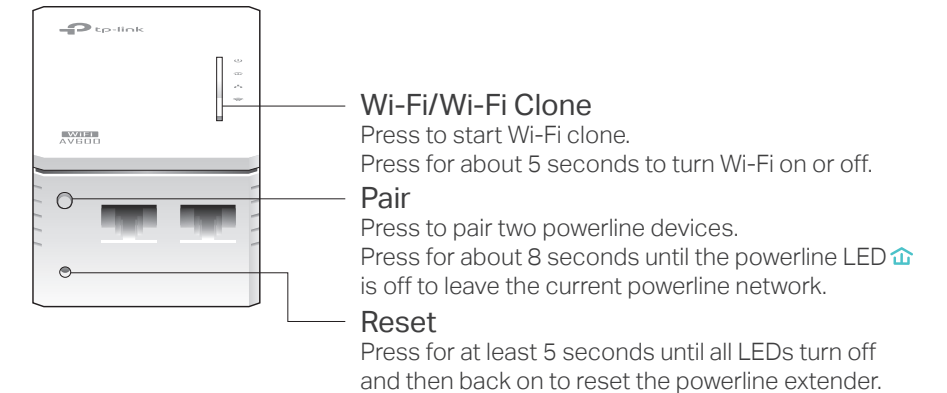
The wireless settings automatically sync from one powerline extender to another when pairing a new device to the secure powerline network.

Any changes that you make to one powerline extender will automatically apply to all powerline extenders in your secure powerline network.

Note: This feature is enabled by default and can be accessed via the extender's web interface.

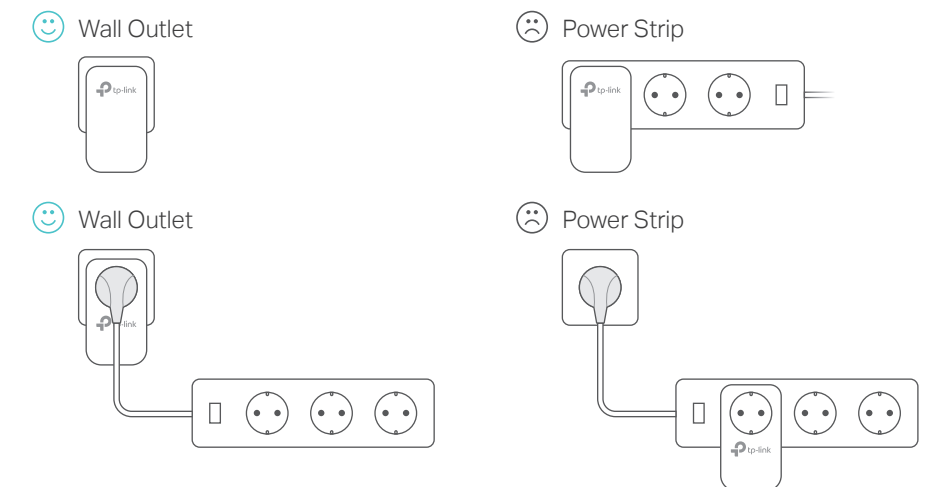


## Button Legend



## Attention

Plug the powerline devices into wall outlets instead of power strips.



## Easy Management

Using tpPLC utility and app for basic configuration:

Find and download the tpPLC Utility on the product's Support page at <http://www.tp-link.com>.

Download the tpPLC App from the App Store or Google Play, or simply scan the QR code.



Using web interface for advanced configuration:

Connect your device to the powerline extender wirelessly and visit <http://tplinkplc.net>. Use 'admin' for both username and password upon initial login.

Note: For advanced settings, please refer to the User Manual on our official website at <http://www.tp-link.com>.

## Frequently Asked Questions

**Q1. How to reset my powerline extender?**

A. With the extender plugged in, press and hold the Reset button until all LEDs turn off. When the LEDs turn back on, the reset process is complete.

**Q2. What can I do if there is no Internet connection in my powerline network?**

A1. Make sure all powerline adapters and extenders are on the same electrical circuit.  
A2. Make sure each device's Powerline LED is on. If not, pair your devices again.  
A3. Make sure all hardware devices are correctly and securely connected.  
A4. Check if you have an Internet connection by connecting the computer directly to the modem or router.

**Q3. What can I do if a successfully-paired extender does not reconnect after relocating?**

A1. Make sure all powerline adapters and extenders are on the same electrical circuit.

A2. Pair it again with another powerline device, and make sure the Powerline LED is on before relocating it.

A3. Check for possible interference, such as washers, air conditioners or other household appliances that may be too close to one of the powerline devices. Plug it into the integrated electrical socket to remove some electrical noise if your powerline device has an integrated electrical socket.



For more information, please visit our website: <http://www.tp-link.com>